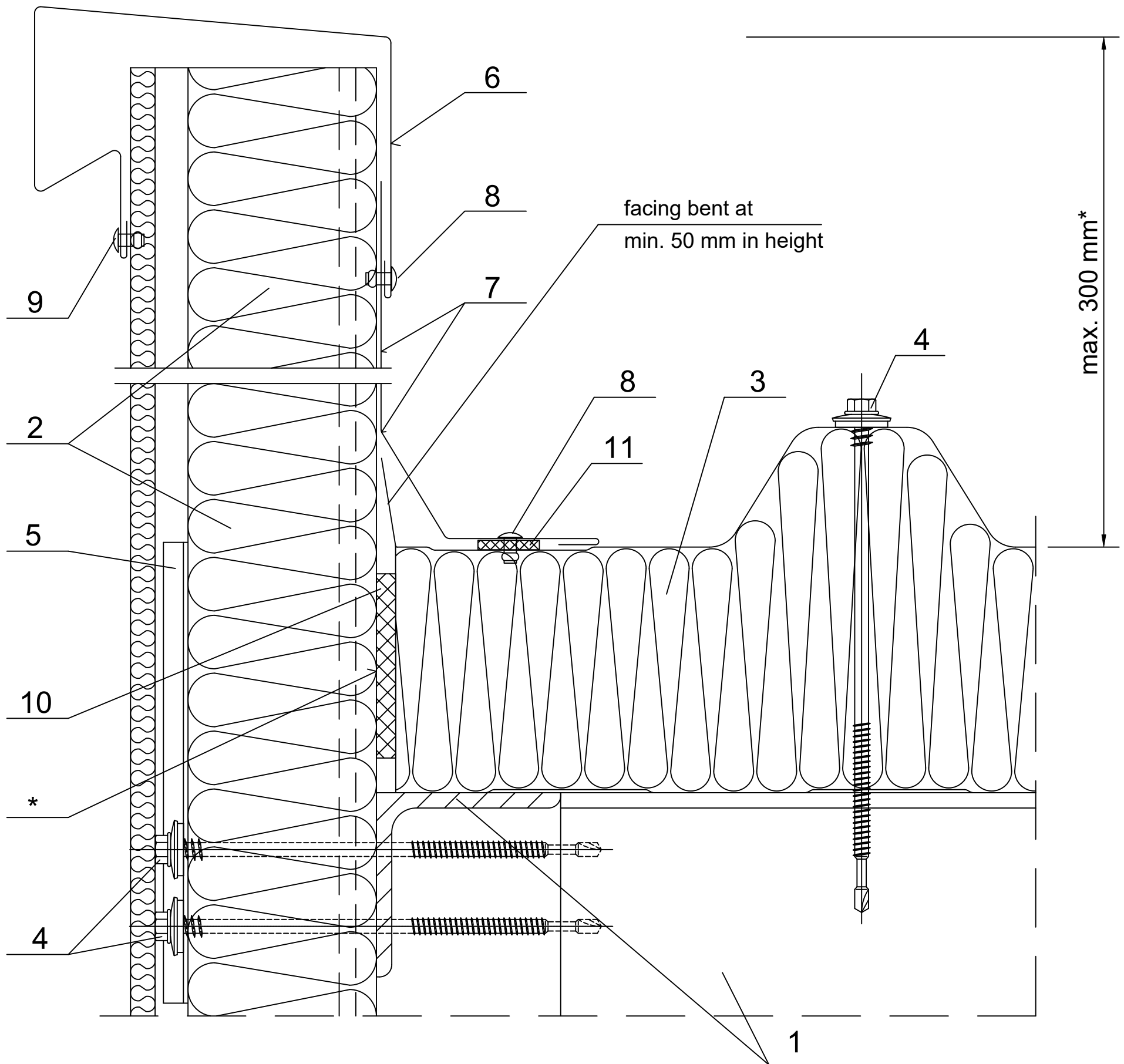


Date	Rev. date	Work nr.	Drw. nr.	Rev.
Drawn by Ruukki	Rev.	M30/S05	-	
Scale 1:3	Building		File nr. P2001/003-00040	



1. Steel structure elements acc. to engineering design of the structure
2. Ruukki SP2D PIR
3. Ruukki SP2C PIR
4. Panel fastener for hot-rolled sheeting rail or for cold-bent sheeting rail
5. EA1B61CN15015. fastener
6. EA1B06 attic flashing
7. Custom ordered flashing
8. Watertight rivet (every 300 mm)
9. Blind rivet
10. Impregnated polyurethane sealant or expanded foam
11. Butyl tape

* for structures with high requirements regarding thermal insulation facing gap is ~30 mm; in this case the maximum support length is 300 mm